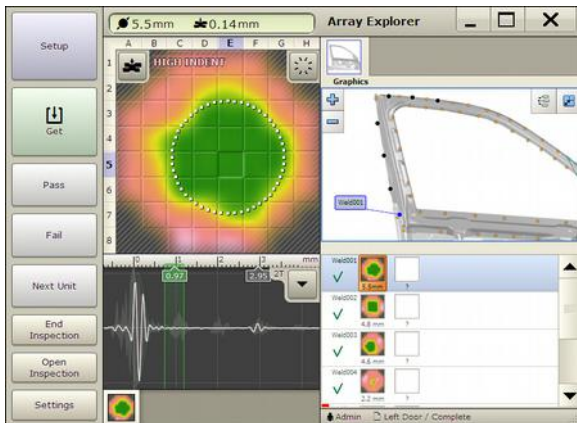


- ◆ portable and simple-in-operation
- ◆ automatic detection of scanning depth inside the metal
- ◆ automatic and manual nugget size estimation
- ◆ built-in reporting system and file storage
- ◆ modern design

## Features

Using the unique technology of multi-channel ultrasonic matrix transducer, RSWA (resistance spot weld analyzer) collects data from the surface and from the internal structures of the nugget. Special algorithms use this data to reconstruct the image of the spot weld and estimate the average diameter of the nugget area in real time.



RSWA uses only one probe to the measurement of weld's spot from 1mm up to 10mm. This eliminates purchasing any expensive probes for different averages of spot.



Of course it is easy to create inspection plans for each parts, saving the measurement results and then transfer data to PC. The device is controlled easily by remote control or touch screen.

## Specifications

Probe frequency:	15MHz
Count of transducers	52
Control:	remote control + touch screen
Display:	10,2" color touch screen, 1024 x 600pixels
Average of spot:	1 – 10mm
Battery:	2x Li-ion battery, battery life 12 hours
Size:	270 x 260 x 115mm
Weight:	4,5kg (battery included)